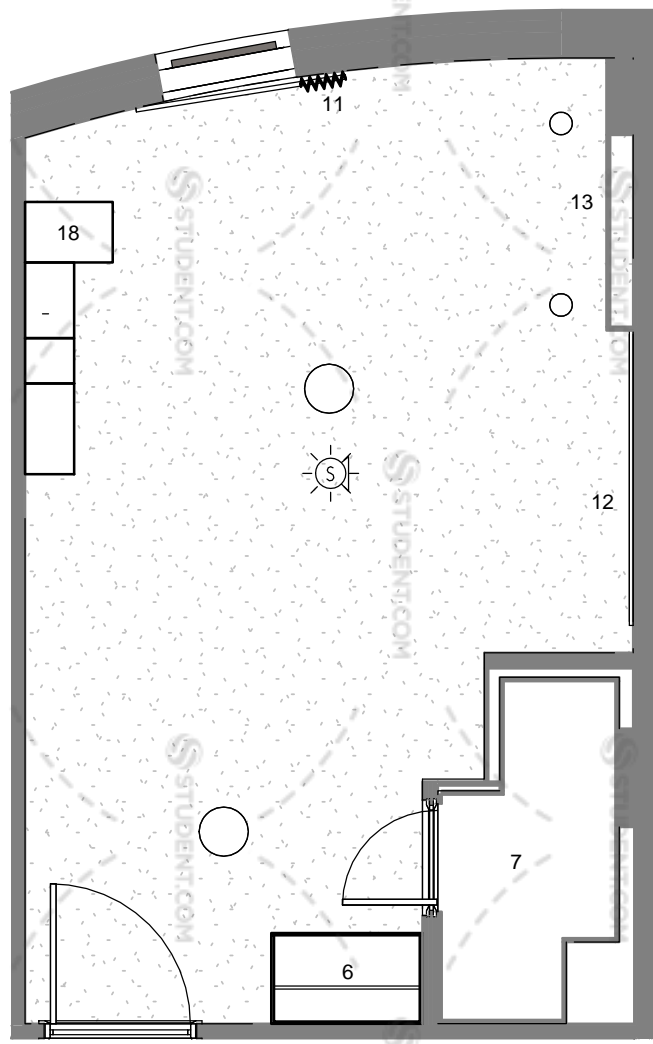
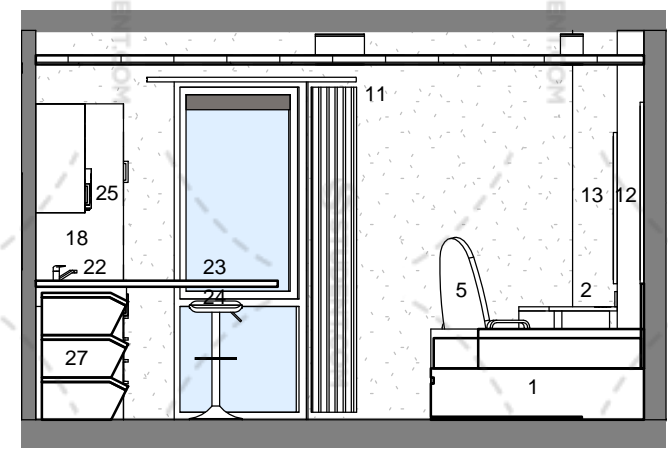


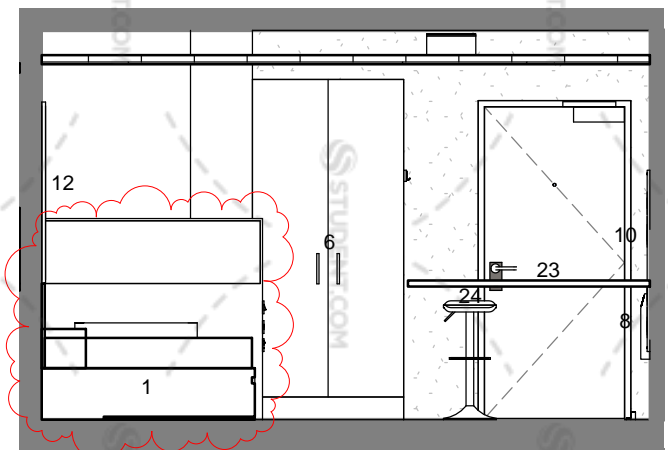
Premium Bedroom 4 Plan
1 : 50



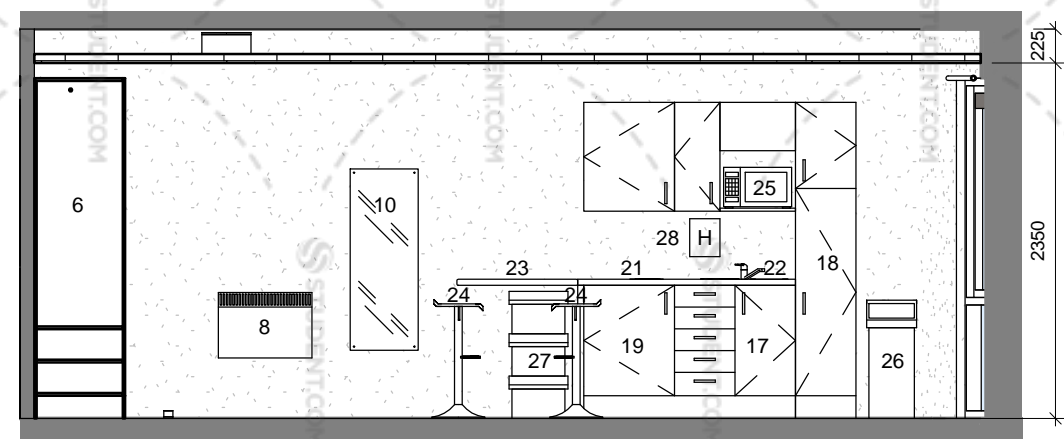
Premium Bedroom 4 Reflected Ceiling Plan
1 : 50



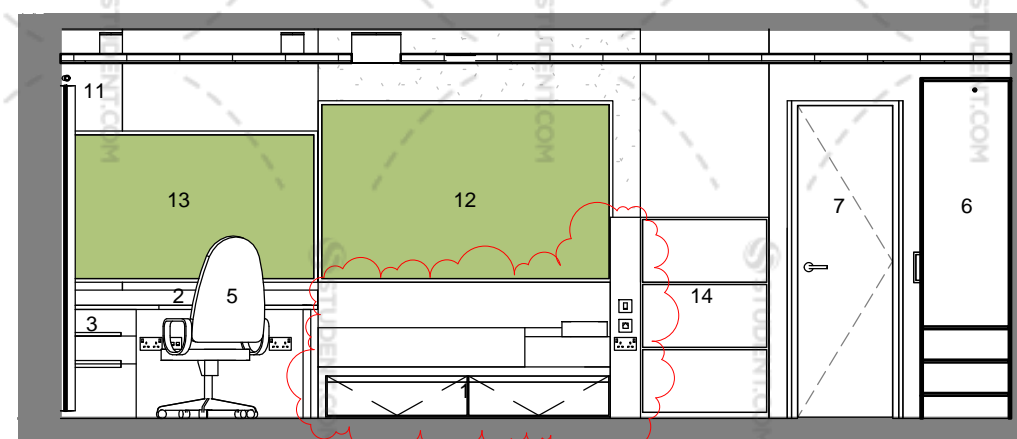
PB4 Elevation 2
1 : 50



PB4 Elevation 4
1 : 50



PB4 Elevation 1
1 : 50



PB4 Elevation 3
1 : 50

BEDROOMS RELATING TO PREMIUM BEDROOM TYPE 4

- GROUND FLOOR 5.5
- FIRST FLOOR 12.5
- SECOND FLOOR 19.5
- THIRD FLOOR 26.5
- FOURTH FLOOR 33.5
- FIFTH FLOOR 40.5
- SIXTH FLOOR 47.5
- SEVENTH FLOOR 54.5
- EIGHTH FLOOR 61.5
- NINTH FLOOR 68.5
- TENTH FLOOR 73.5
- ELEVENTH FLOOR

notes:
All dimensions are in millimetres unless stated otherwise. No dimensions to be scaled from drawings. All dimensions to be checked on site prior to manufacture.
Any discrepancies between drawings and site conditions are to be reported to the contract manager.
This drawing is to be read in conjunction with all relevant Structural Engineers and Mechanical & Electrical Engineers drawings and specification.

- KEY
1. [BEDROOM AREA] Double Bed - 1950L x 1350W x 340H (4/6) with integrated headboard shelving (1330H x 200D x 1260W) and 2 under bed storage flaps
 2. Desk (Scalloped) - 1800L x 650/450D with 2 No. grommets and a chrome leg. Clear height to underside of desk 720mm
 3. 3 Drawer Pedestal Unit 550W x 600D x 720H
 4. Shelving Unit - (custom to recess wall) 850W x 1330H x 250D
 5. Desk chair - operator type - covered with Camira Extreme Plus Range
 6. Wardrobe - 2250H x 1000W x 600D, 3 shelves
 7. Shower Pod - Walkers S6 - finishes as per WMS0243/12 rev C document
 8. Electric Panel Heater
 9. Double Coat Hook - on edged square pattress
 10. Mirror - 450W x 1200H - with bevelled edge and mirror capped screws
 11. Curtain rail and curtains - rail to extend 150mm beyond window (minimum)
 12. Pinboard - 1950W x 1200H above bed
 13. Pinboard - 1800W x 1000H above desk
 14. Book case - 550W x 1000H x 250D
 15. Not used
 16. [KITCHEN AREA] Wall Unit - 500 x 800mm
 17. Base Unit under Sink - 600W x 860H (including 100mm plinth) x 600D
 18. Tall Cupboard - 500W x 600D x 2100H + 100 Plinth
 19. Worktop - 40mm thick roll edge, 900mm floor to top surface and 400mm splashback panel to match
 20. Fridge with Icebox - 137lt fridge/ 85lt freezer - in Housing Unit (600W x 860H x 600D)
 21. Extract Fan and Hood built into Housing Unit - 600x500mm high - extract at 30 ltr/sec
 22. Hob - 2 ring electric stainless steel
 23. Sink - stainless steel
 24. Breakfast Bar (x1) - to match worktop
 25. Bar Stools - (x2)
 26. Microwave Oven - Combination Daewoo 800w 20lt
 27. General Waste Bin (x1) - 50lt
 28. Recycling Bin (x1) - 30lt
 29. Fire Blanket (x1) - 1000mm x 1000mm

dwg status: **PRELIMINARY**

Rev	Description	Date	By	Chk
C	Bed updated to include shelf	16/05/14	IR	GE
B	Generally revised in accordance with Client comments	09/05/14	IR	GE
A	First Issue	16/04/14	IR	GE



oea
oconnell east architects
63 Newton Street, Manchester, M1 1ET
t: 0161 839 9380 f: 0161 833 1638

dwg title:	Premium Bedroom Type 4
Date 1	
job title:	Ablett House for Knightsbridge Student Housing Ltd.
scale:	1 : 50 @ A3 drawn: IR
date:	16/04/14 job no: 1425
dwg no:	72_007 rev: C